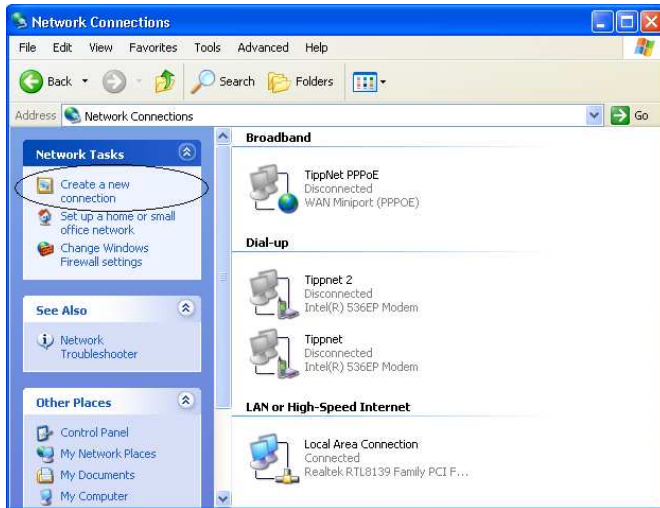
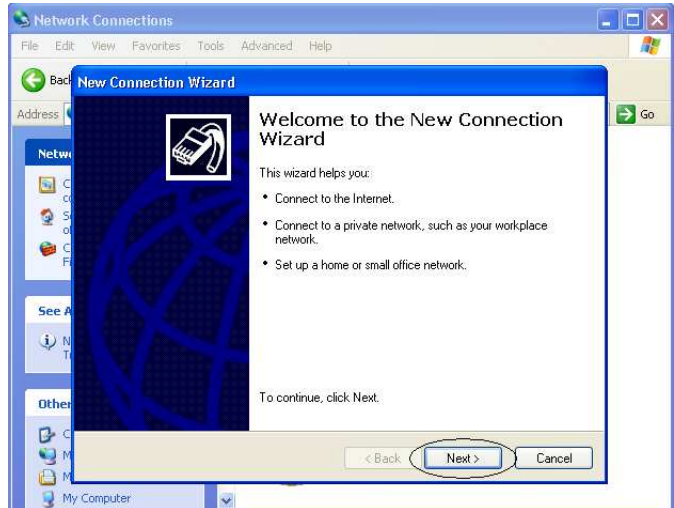


Start → Settings → Control Panel → Network Connection

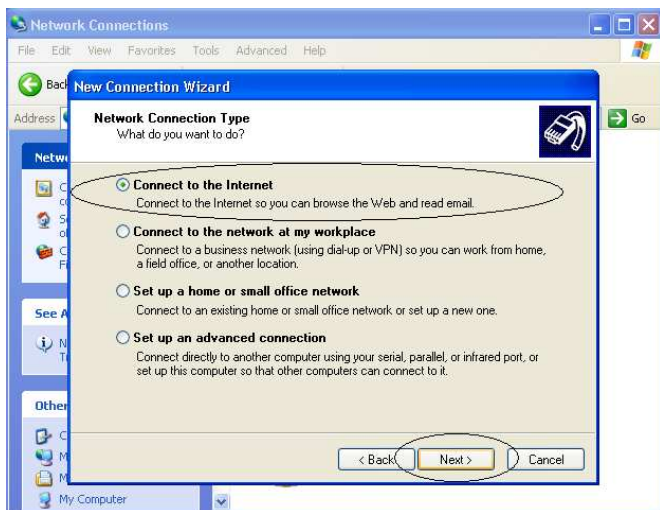
Create New Connection:



Korak 1



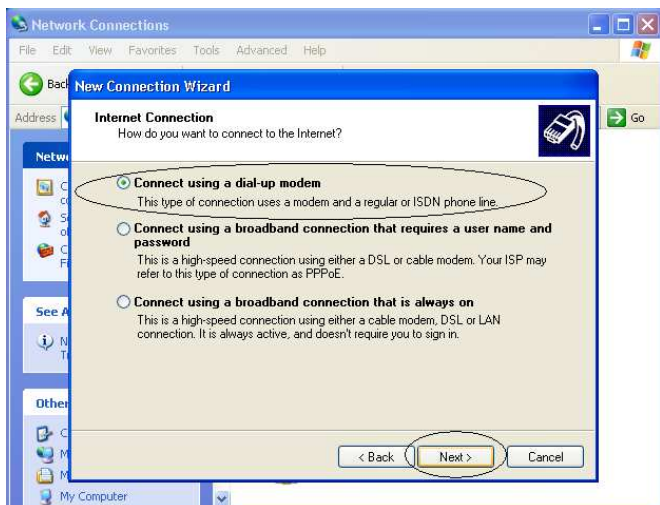
Korak 2



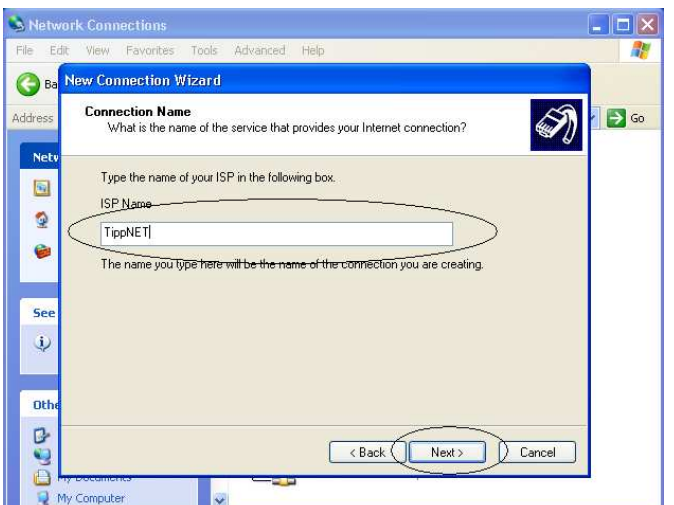
Korak 3



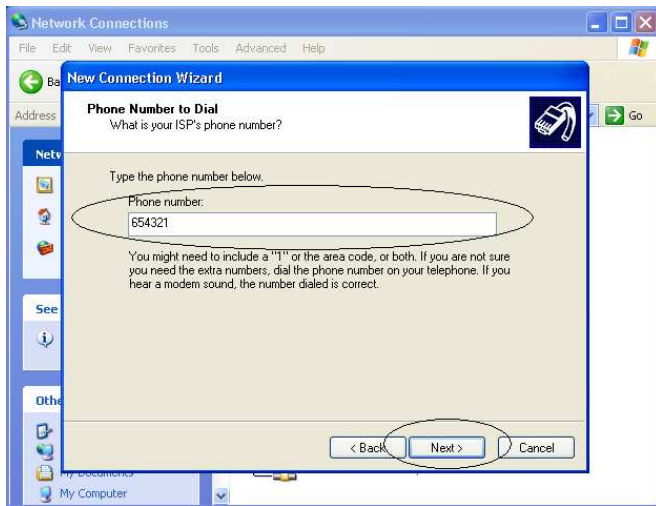
Korak 4



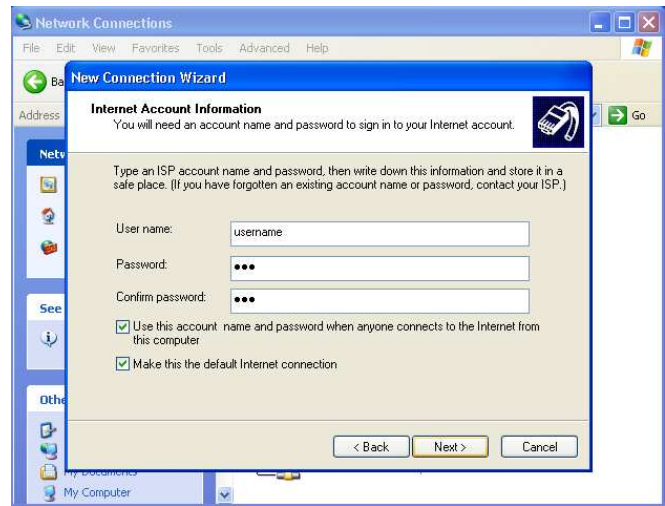
Korak 5



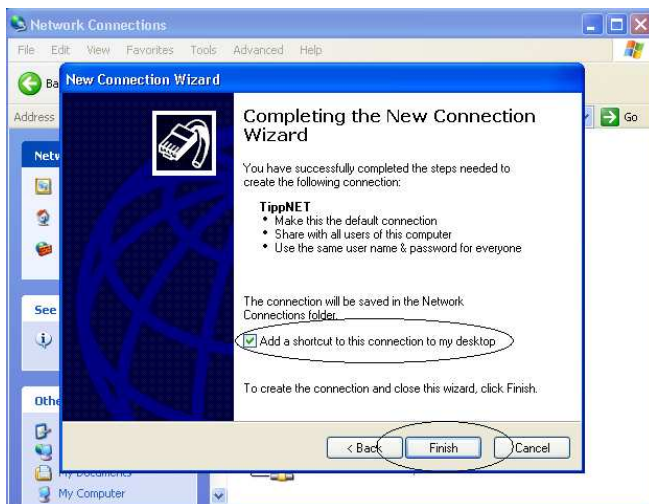
Korak 6



Korak 7



Korak 8



Korak 9

Outgoing mail (SMTP) server	mail.tippnet.rs
Incoming mail (POP3) server	mail.tippnet.rs
E-Mail adresa:	username@tippnet.rs
ftp server	ftp.tippnet.rs
www server	www.tippnet.rs
Telefonski brojevi ISDN	(024) 654-321
Telefonski brojevi SMIN	(042) 110-321
<i>Tarifira se kao lokalni poziv sa teritorije cele srbije</i>	
Proxy	proxy.tippnet.rs 8080

Mail i News servisi treba da se podese u aplikacijama (za mail i news) da bi servisi e-mail-a i news-a radili, dok se servisima za ftp, gopher i web može pristupiti direktno iz popularnih browser-a (programi za gledanje web stranica) Netscape Communicator ili Microsoft Internet Explorer kucanjem adrese u **Address** ili **Location** polje. Npr.: za pristup TippNet Ftp servisu : <ftp://ftp.tippnet.rs>, Web servisu: <http://www.tippnet.rs>.



Korisnička služba - Ügyfélszolgálat
Subotica, Karađorđev Put 2.

Radno vreme: 8-16h

Telefon: (024) 555-765
e-mail: support@tippnet.rs